



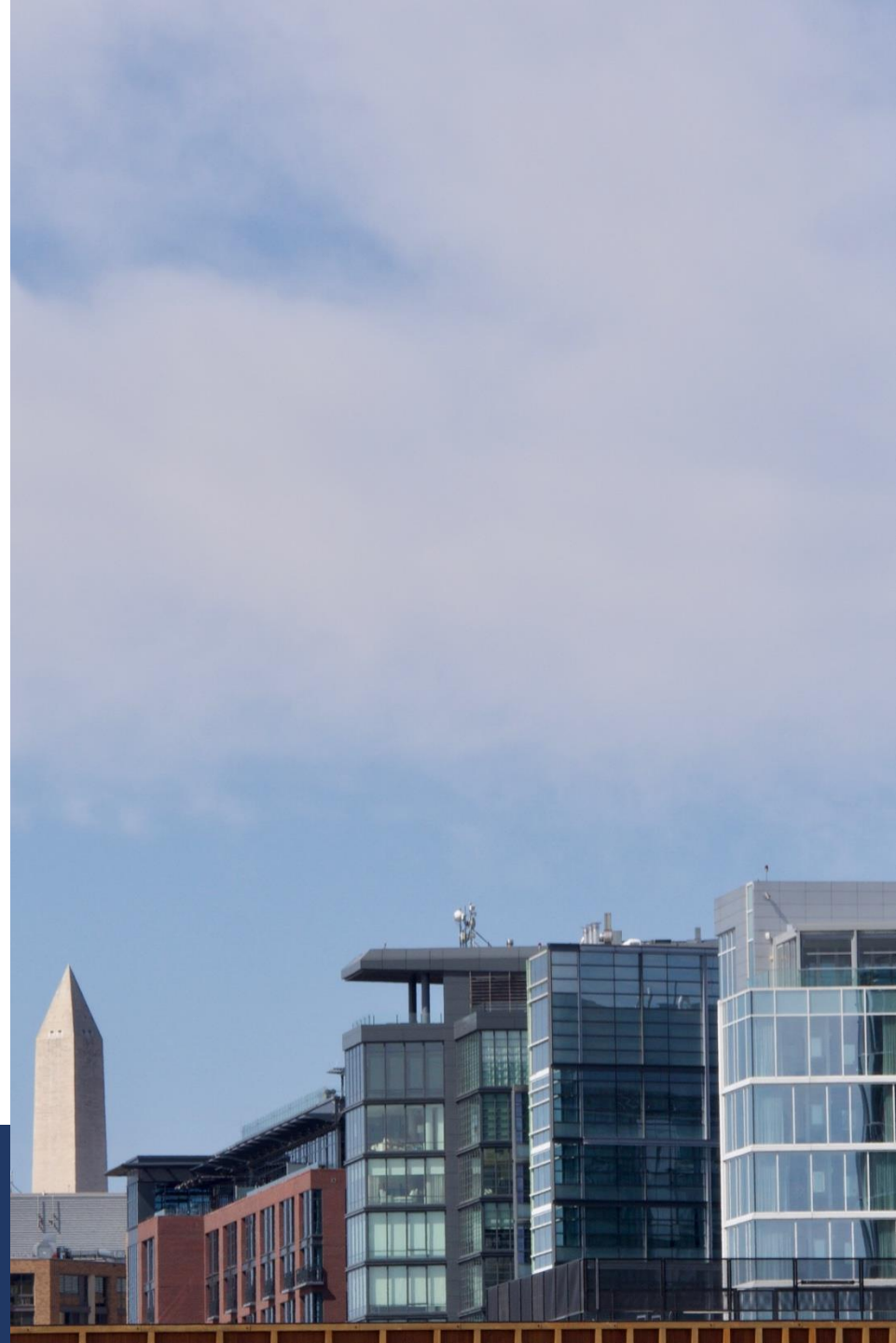
*National Association of
State Energy Officials*

NASEO Buildings Committee Webinar:

Achieving Energy Savings Through Smart Surfaces

Welcome! We'll begin shortly.

March 11, 2025



Agenda

NASEO Buildings Committee Webinar: Achieving Energy Savings Through Smart Surfaces

1:00 p.m. – 2:00 p.m. ET

- NASEO Program updates
- Presentation
 - **Moderator:** Blake Shelide, Manager, Codes and Standards, Oregon Department of Energy
 - **Speaker:** Bill Updike, Program Manager, Smart Surfaces Coalition
- Q&A and Discussion

Recent and Upcoming Events

Recent:

- **NASEO-NARUC Grid-interactive Efficient Buildings Working Group Webinar: Scaling Demand Flexibility with Software** - January 30, 2025: This webinar featured Rajiv Shah of Octopus Energy Group discussing issues of scaling demand flexibility and VPP solutions, drawing on Octopus Energy and Kraken Technologies experiences.

Upcoming:

- March 17, 2025, 2:00 – 3:00 p.m. ET: NASEO National Rebates Update Call (State and Territory Energy Offices Only)
- March 20, 2025, 2:00 – 3:00 p.m. ET: NASEO Washington Update (NASEO State and Affiliate Members Only)
- April 30 – May 2, 2025: U.S. Department of Energy's Better Buildings, Better Plants Summit, Capital Hilton Hotel (for more info and to register, please click [here](#))
- May - June 2025: NASEO Regional Meetings (see [NASEO Events Page](#) for dates and locations)
- September 8-9, 2025: NASEO National Buildings Summit (more information to be announced)

Thank you!

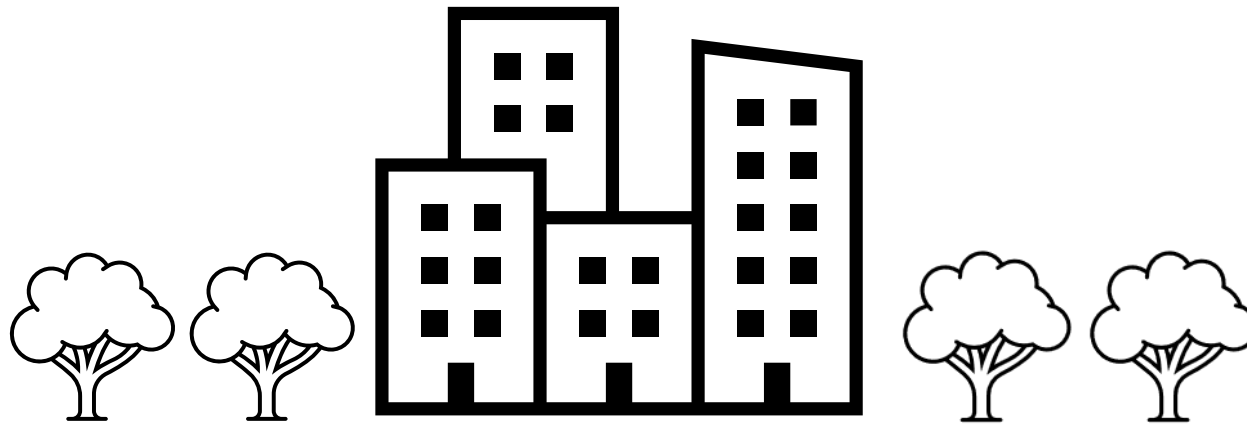
NASEO Contacts

- Jasmine Xie (jxie@naseo.org)
- Sandy Fazeli (sfazeli@naseo.org)



The Smart Surfaces Coalition is made up of more than 40 leading national and international organizations with a shared commitment to creating **cooler**, **healthier**, and **more resilient** cities by cost-effectively working to reduce the impacts of extreme urban heat and flooding.

THINKING OUTSIDE THE BOX



What Are Smart Surfaces?

Infrastructure strategies that cost-effectively manage urban heat and stormwater while maximizing health, energy, climate, and resilience co-benefits

Cool Roofs



Green Roofs



Porous + Permeable Pavements



Solar Photovoltaics



Cool Pavements



Trees and Rain Gardens



Low- and Zero-Carbon Concrete

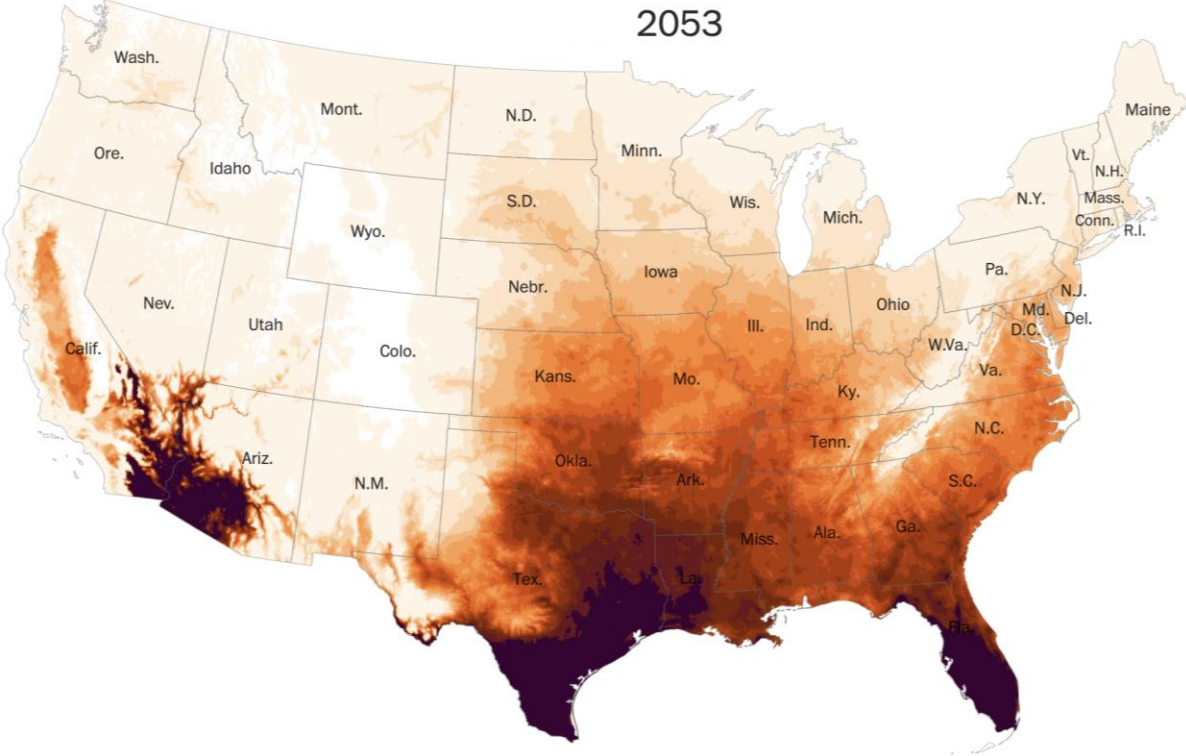
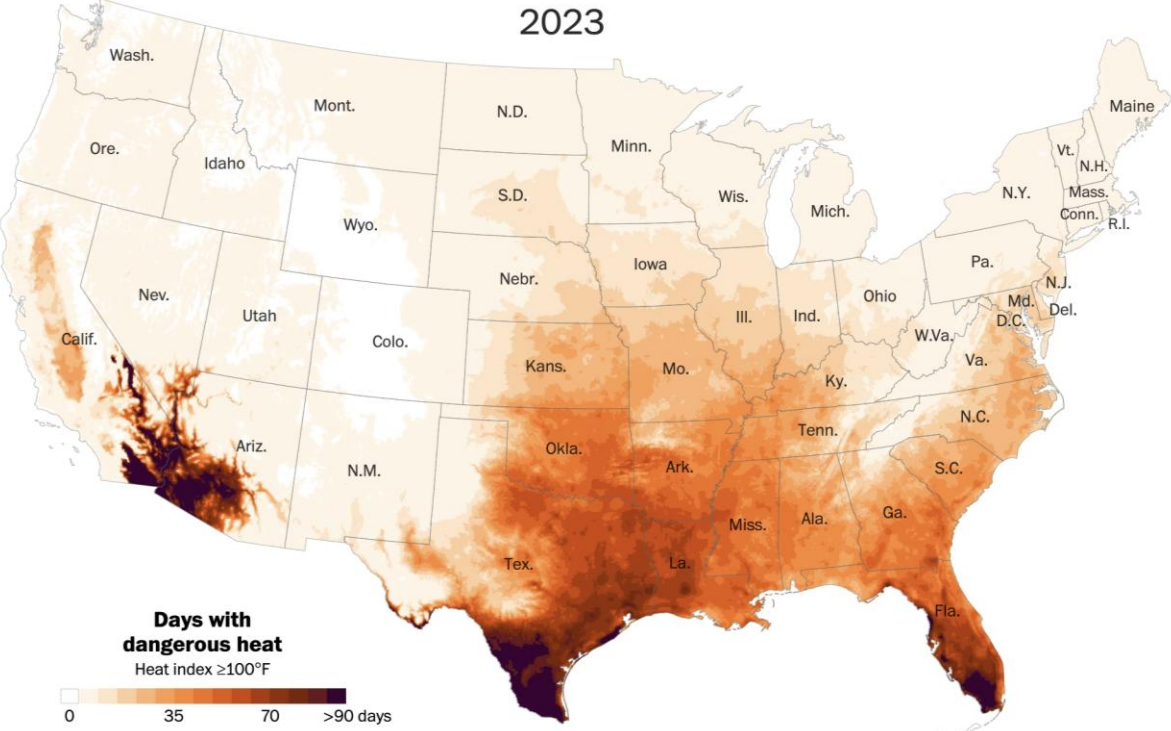


Combined Surfaces



Source: [Smart Surfaces Coalition & Carnegie Mellon University](#)

By mid-century, nearly two-thirds of Americans will experience perilous heat waves, with some regions in the South expected to endure **more than 70 consecutive days over 100 degrees.**¹

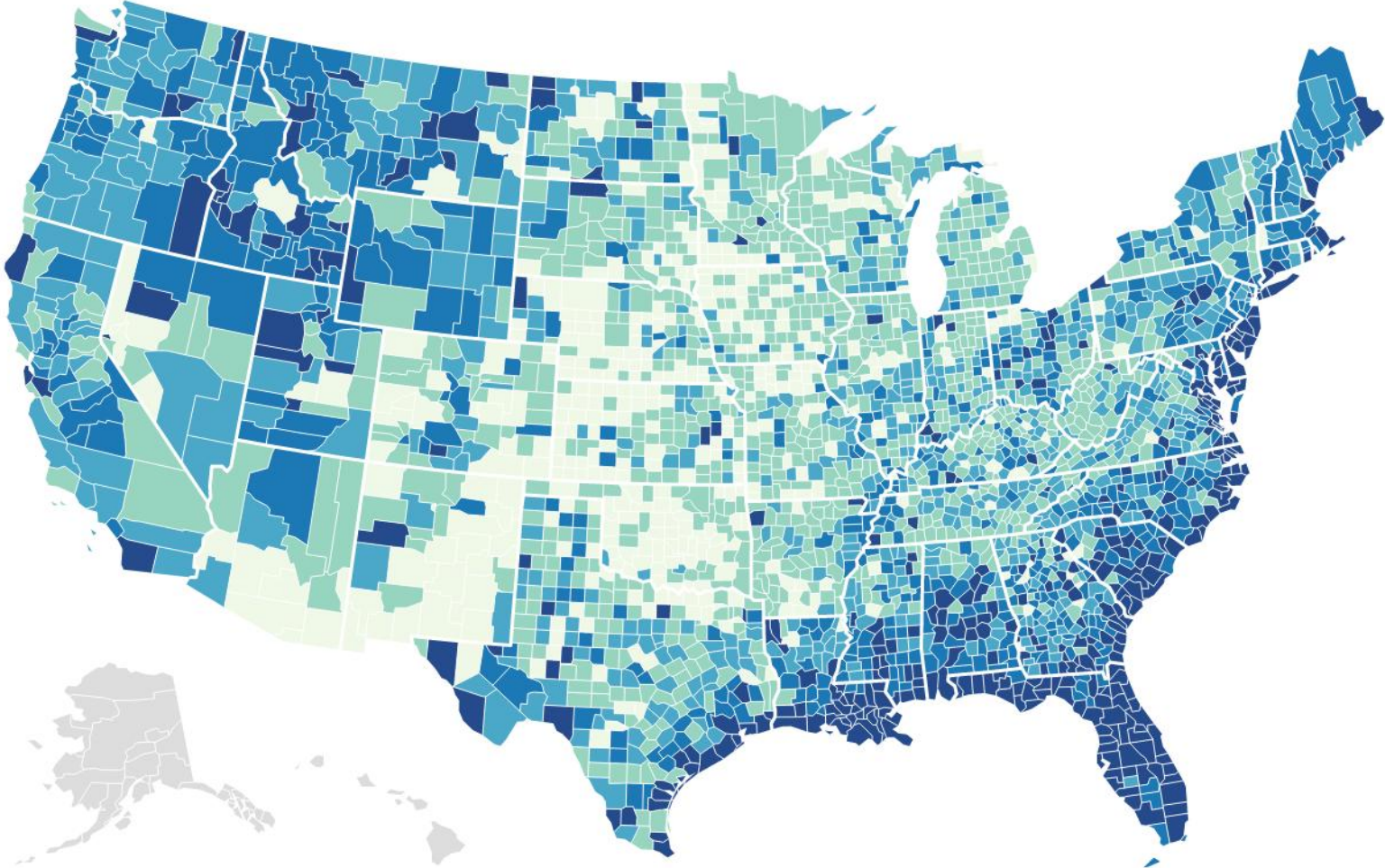
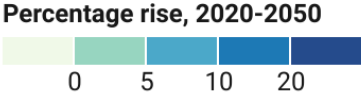


¹Washington Post, 2023

Source: [Washington Post](#)

Where flood risk is projected to rise fastest in the US

A new analysis projects changes in flood risk between 2020 and 2050 by zooming in on every neighborhood across the U.S.



Flood damage measured in 2020 U.S. dollars.

Map: The Conversation/CC-BY-ND • Source: Wing, et al. 2022 • Created with Datawrapper

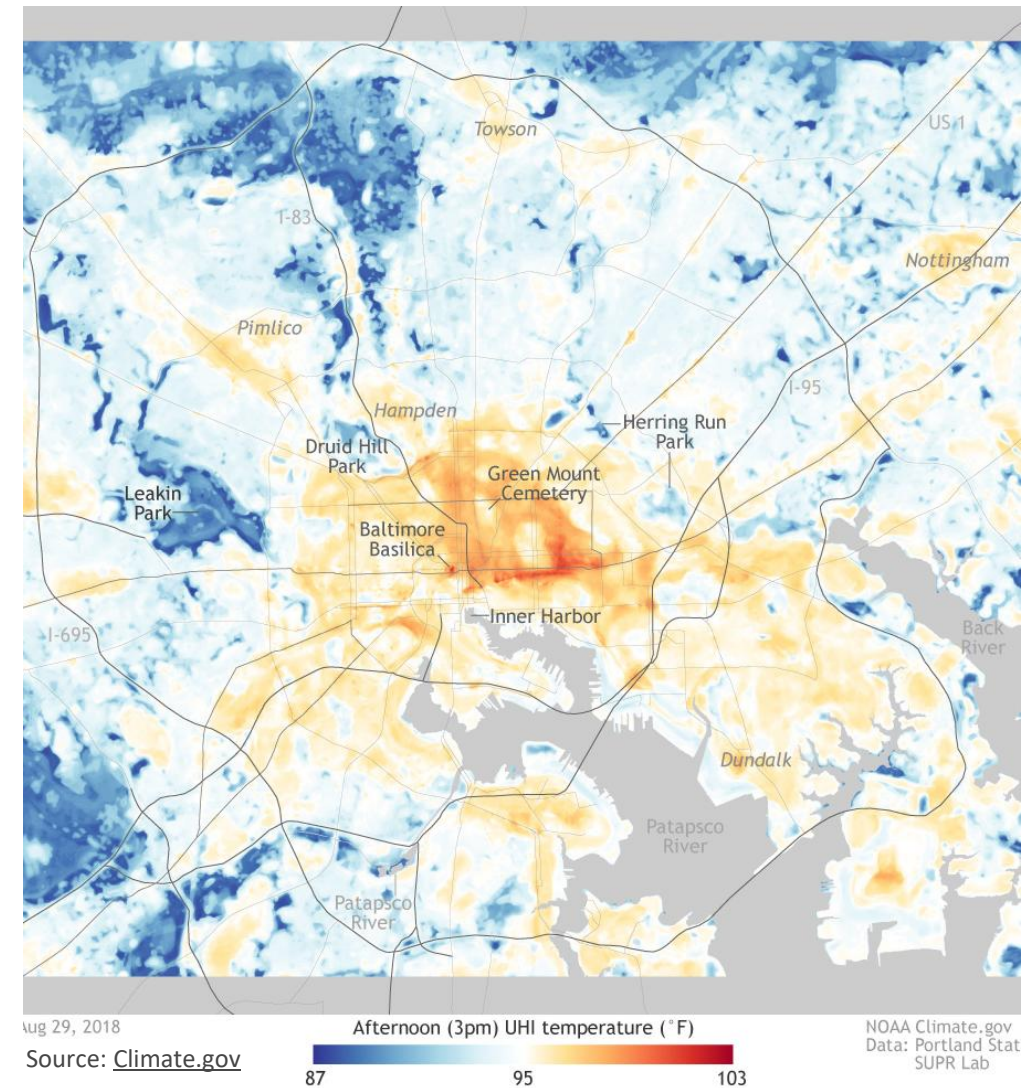
Urban Heat Island Effect

Urban heat islands can be **5 to 9 degrees Fahrenheit hotter** than rural areas during the day and can be as much as **22 degrees F hotter at night.**¹

Some neighborhoods in cities, often in low-income areas, can be as much as **15-20 degrees F hotter** during the day.

¹American Forests, 2021

Heat Map of Baltimore, MD



Cities for Smart Surfaces

SSC is partnering with metro areas across the US to facilitate the adoption of Smart Surfaces and working with in those regions to support community-led, local Smart Surface implementation projects.



Cities for Smart Surfaces Project Partners

Project Coordinator



Data Visualization and Cost-Benefit Analysis



City and Community Engagement



Federal Funding



COLUMBIA LAW SCHOOL

SABIN CENTER FOR CLIMATE CHANGE LAW



Policy + Legal



COLUMBIA LAW SCHOOL

SABIN CENTER FOR CLIMATE CHANGE LAW



Health Research and Communications



UPSTATE MEDICAL UNIVERSITY

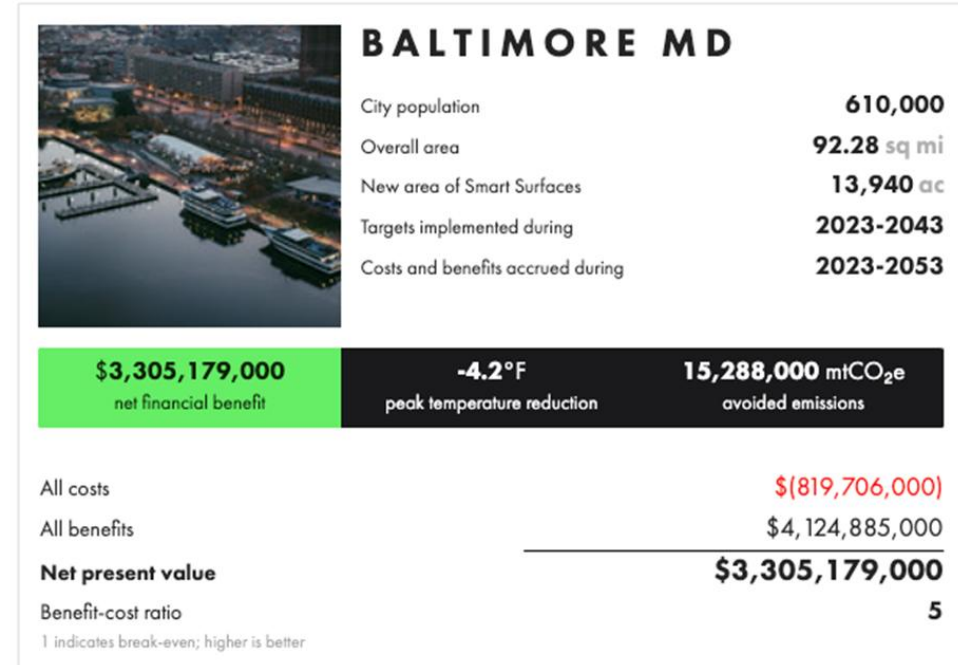


Cost Benefit Analysis for Baltimore



Adoption of Smart Surfaces in Baltimore could result in:

- **\$10:1** Benefit-Cost ratio
- **5+ F** peak summer temperature reduction
- **Millions** of tons of CO₂e reduced
- **\$Billions** in net financial benefits



SSC engagement + analysis with Baltimore led to legislation
within 2 years

Energy Efficiency Benefits of Smart Surfaces

- **Cool Roofs & Walls**

- [11-27% peak cooling reductions](#) in residential air-conditioned buildings (3-4% total energy reductions)
- Retrofitting 80 percent of commercial building roof area in the U.S. would yield [net annual energy cost savings of \\$735 million](#), and annual CO2e reduction of 6.2 million tonnes
- For cool walls, research shows up to 27% in HVAC energy cost savings reductions

- **Green Roofs**

- Cooling season - [Up to 84% lower thermal heat gain](#) in comparison to black roofs, up to 72% reduction in heat flux
- Heating season - [13% to 33% savings](#) compared to black roofs
- [Simple payback of 6.2 years nationally](#) (based on 50-year average annual savings), internal rate of return of 5.2% and an ROI of 224%, based on a net present value of \$2.7/square foot

- **Trees**

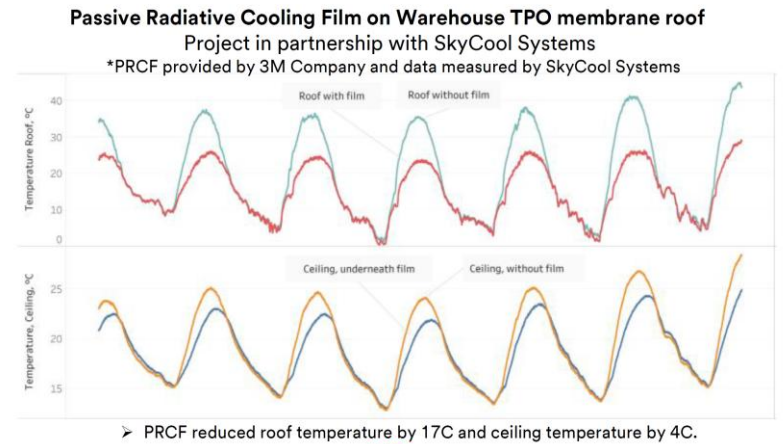
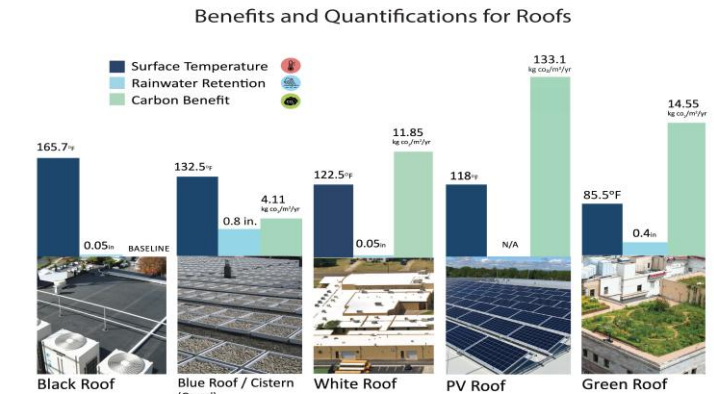
- [Energy savings up to 25%](#) for residential buildings

- **Radiative Cooling Films & Panels**

- [Energy savings 15-40%](#) - 2x-3x more energy savings than PV generates per unit area

- **Combined Surfaces**

- Solar + Cool Roof – [Increase solar power efficiency by ~10%](#) and energy output 3-4%
- Solar + Green Roof – [Increase solar energy output 3-4%](#)



Peak Demand Reduction Potential for Smart Surfaces

- Our modeling shows we can **double the albedo/solar energy reflectance** with city-scale smart surface interventions
- We can reduce peak summer temperatures **city-wide by 5°F or more**, and much more in some neighborhoods -- **generally disinvested low-income areas**
- Each 1°C/1.8°F of temperature **increases peak electricity load up to 4.6%**
- **Increase of total electricity consumption of up to 8.5%** for every 1°C/1.8°F of temperature increase
- Potential for reductions of **peak electricity demand up to 10-15%** and decreases of **total electricity consumption up to 20-25%**

SSC Web Tools

✓ Decision Support Tool



✓ Benefit-Cost Analysis Tool

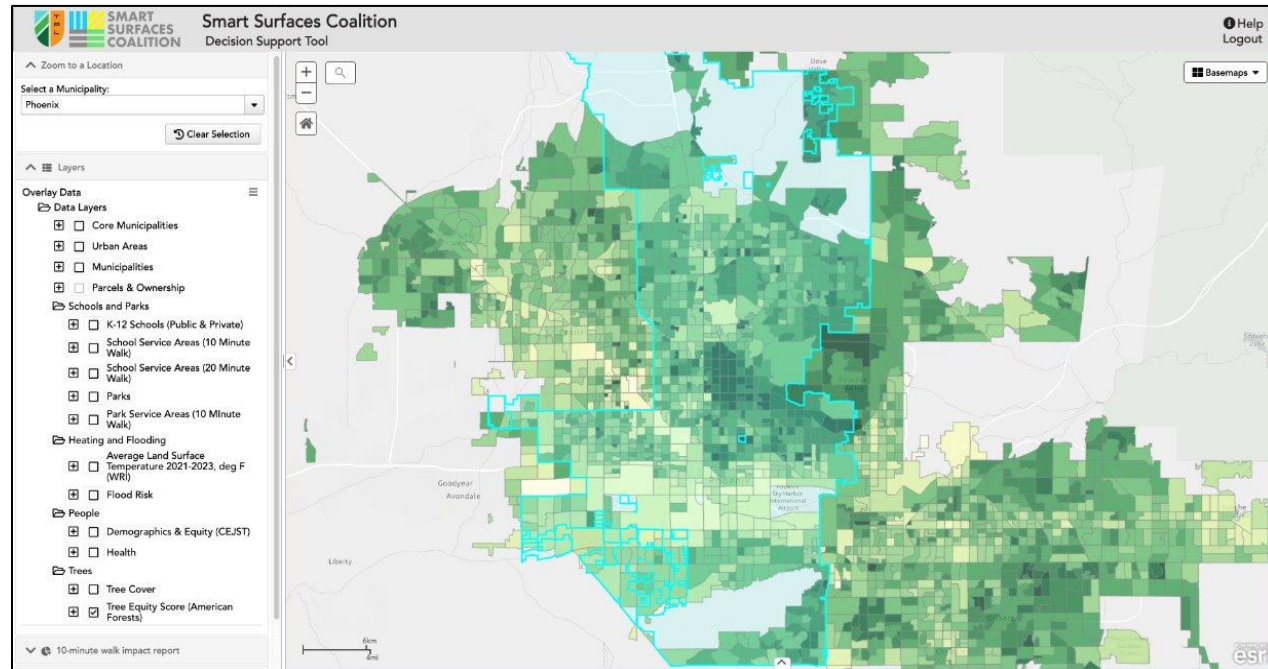


✓ Smart Surfaces Policy Tracker



Together, these three tools help cities and metro areas develop and implement climate, sustainability, and/or resilience policies, plans, grant applications and infrastructure investments

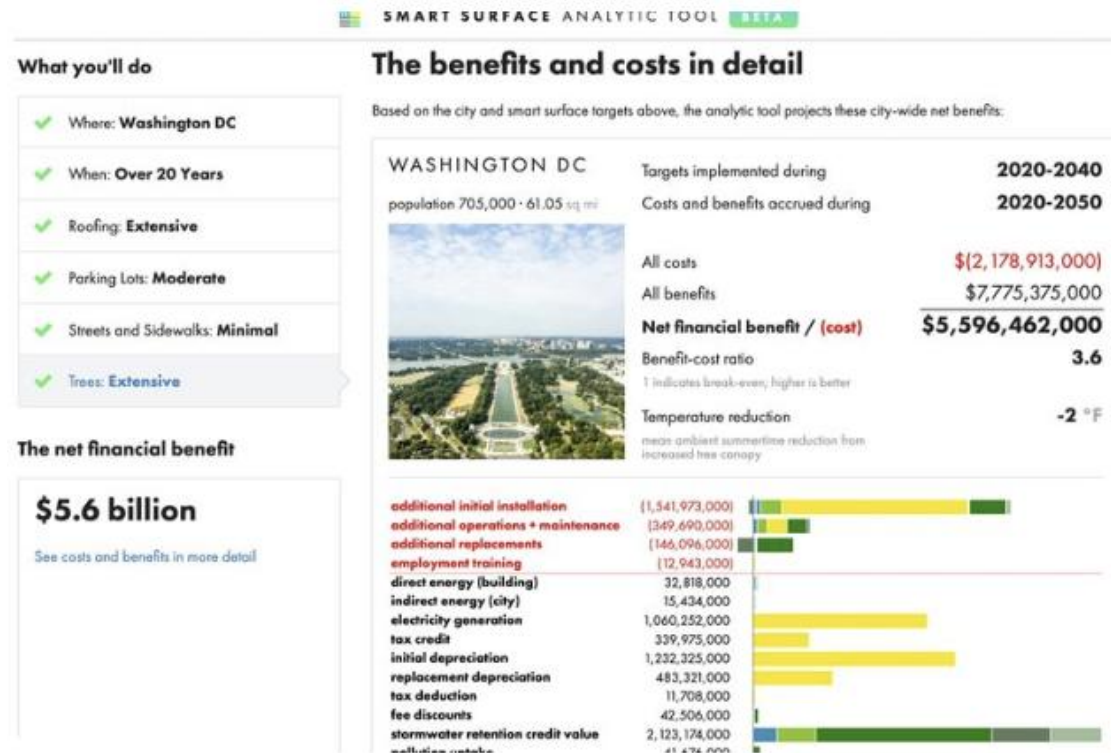
Decision Support Tool (DST)



Supports:

- Communication/education between city staff, policy makers, and public
- Development of city plans, policies, and grant applications
- Project and site prioritization

Benefit-Cost Analysis Tool (BCAT)



Includes:

- \$\$, °F, and CO2e impact through 2030, 2040, and 2050
- Benefits from energy, air quality, stormwater, health, and more

Allows municipalities to:

- Model impacts of policy changes and city- and neighborhood-scale infrastructure projects
- Communicate to public, city staff, policy makers, and City Manager/Mayor
- Analyze metrics for city plans and provide data for federal and state grant applications

Smart Surfaces Policy Tracker (SSPT)

SMART SURFACES POLICY TRACKER

POLICY TRACKER

Lorem ipsum dolor sit amet, consectetur adipiscing elit. Aenean commodo ligula eget dolor. Aenean massa. Cum sociis natoque penatibus et magnis dis parturient montes, nascetur ridiculus mus. Donec quam felis, ultricies nec, pellentesque eu, pretium quis, sem. Nulla consequat massa quis enim. Donec pede justo, fringilla vel, aliquet nec, vulputate eget, arcu. In enim justo, rhoncus ut, imperdiet a, venenatis vitae, justo. Nullam dictum felis eu pede mollis pretium.

FILTER BY POLICY TYPE(S):
Any

FILTER BY POLICY GOALS(S):
Any

FILTER BY SMART SURFACE(S):
Any

FILTER BY CLIMATE ZONE:
Any

FILTER BY STATE:
Any

FILTER BY REGION:
Northeast

FILTER BY JURISDICTION:
Any

FILTER BY JURISDICTION SIZE:
>150K

SEARCH:
Enter keywords

SEARCH CLEAR

CURRENT FILTERS:

Allows policymakers to:

- Search for policies by Smart Surface technology, jurisdiction size/location, climate zone, etc.
- Identify/compare policy language from peer cities
- Review 450+ policies to date



**SMART
SURFACES
COALITION**